



— TOOL PROGRAM —

# HeRO

## — TOOL PROGRAM —



- The **HeRO Tool Program** was established to source high-quality industrial janitorial tools at competitive prices while supporting humanitarian causes.
- The **HeRO Tool Program** employs workers in every aspect of the manufacturing supply chain.
- The **HeRO Tool Program** underwrites the daily meal programs for eight rural Honduran schools that feed over 800 children every day.
- The **HeRO Tool Program's** ultimate goal is to establish 200 schools with integrated lunch programs throughout Honduras. Through education, HeRO believes it can help eliminate extreme poverty in Honduras by 2050.

1. **Customizable** - Every tool can be manufactured to meet our customer's exact specifications. This includes weight, color, and connector type.

2. **Logistics** - HeRO has developed an international supplier network capable of offering an extensive range of shipment options that save time and money.

3. **Experience** - With a combined staff experience totaling half a century, HeRO is able to leverage its indepth understanding of janitorial supply to benefit each and every customer.



HeRO ITEM # 11001

Product Weight: 21.0 oz

Case Pack: 12 per case

Product Dimensions:

Length - 17.0 in [43.0 cm] Tailband Width - 16.0 in [40.0 cm]

Case Dimensions:

Length - 20.0 in [50.8 cm] Width - 11.5 in [29.2 cm] Height - 12.0 in [30.5 cm] Weight - 16.8 lbs [7.6 kgs]

## HeRO 100% Recycled Mop

[info@herotoolprogram.com](mailto:info@herotoolprogram.com) | (949) 838-7076



**100% Recycled** - Designed with 100% recycled materials originating from post-consumer soda bottles and post-industrial cotton, this mop is designed for commercial use and repeated laundering.

**Scrub Pad** - Constructed from a coarse fiber mesh, scrub pads, also known as scouring pads, are designed to power through tough grease and grime. Manufactured with a scrub pad, the HeRO 100% Recycled Mop enables staff to remove stubborn floor stains and shoe scuffs on baseboards.

**Loop-Ended & Bartacked** - The HeRO 100% Recycled Mop features a loop-ended design. This comprises of a single yarn strand being continuously looped throughout the entire length of the mop. This characteristic greatly improves the durability and launderability of the mop versus a “cut-end” design. Furthermore, the mop is tailbanded by a half-inch strip of polyester that prevents bunching and increases floor coverage.







## HeRO Recycled Saddle Mop

info@herotoolprogram.com | (949) 838-7076

**HeRO ITEM # 11002**

**Product Weight:** 20.0 oz

**Case Pack:** 12 per case

**Product Dimensions:**

Length - 18.0 in [45.7 cm] Tailband Width - 19.0 in [48.3 cm]

**Case Dimensions:**

Length - 19.7 in [50.0 cm] Width - 14.2 in [36.0 cm] Height - 11.0 in [28.0 cm] Weight - 17.2 lbs [7.8 kgs]



**100% Recycled** - The HeRO Recycled Saddle Mop is the workhorse of the janitorial industry. Designed with 100% recycled materials originating from post-consumer soda bottles and post-industrial cotton, this mop is designed for commercial use and repeated laundering.

**Scrub Pad** - Constructed from a coarse fiber mesh, scrub pads, also known as scouring pads, are designed to power through tough grease and grime. Manufactured with a scrub pad, the HeRO Recycled Saddle Mop enables staff to remove stubborn floor stains and shoe scuffs on baseboards.

**Loop-Ended & Bartacked** - The HeRO 100% Recycled Mop features a loop-ended design. This comprises of a single yarn strand being continuously looped throughout the entire length of the mop. This characteristic greatly improves the durability and launderability of the mop versus a "cut-end" design. Furthermore, the mop is tailbanded by a half-inch strip of polyester that prevents bunching and increases floor coverage.





HeRO ITEM # 11003  
Product Weight: 16.0 oz

Case Pack: 12 per case

Product Dimensions:

Length - 17.0 in [43.0 cm] Tailband Width - 16.0 in [40.0 cm]

Case Dimensions:

Length - 15.0 in [38.1 cm] Width - 19.0 in [48.3 cm] Height -  
7.0 in [17.8 cm] Weight - 13.8 lbs [6.3 kgs]

## HeRO Microfiber Mop

info@herotoolprogram.com | (949) 838-7076



**Microfiber Mops** - Constructed from ultra-dense fibers that are woven into single strands, microfiber mops have a superior ability to trap dirt, dust, and moisture. Moreover, their innovative construction is far lighter and more absorbent than comparable cotton mops. These characteristics make microfiber mops an excellent choice for scratch-sensitive surfaces, intricate tile, restaurants, offices, hotels, and health care facilities.

**Scrubbing Saddle Connector** - The HeRO Microfiber Mop features a deluxe saddle connector that's constructed from scrub pad material. This enables cleaning personnel to power through tough grime and grease.

**Color Coded** - Color coding helps prevent cross contamination and organizes specific duties. For example, red signifies hospital or bio-cleanup, blue for office or general, yellow for bathrooms, and green for kitchen / food service.





## HeRO Double-Lock Mop Head

HeRO ITEM # 11004

**Product Weight:** 21.0 oz

**Case Pack:** 12 per case

**Product Dimensions:**

Length - 19.0 in [48.3 cm] Tailband Width - 14.0 in [35.6 cm]

**Case Dimensions:**

Length - 20.0 in [50.8 cm] Width - 15.8 in [40.1 cm] Height - 9.8 in [24.9 cm] Weight - 17.0 lbs [7.7 kgs]

[info@herotoolprogram.com](mailto:info@herotoolprogram.com) | (949) 838-7076



**Specialized Connector** - Designed for compatibility with Scott Young Research's "Changer Handle," the HeRO Double-Lock Mop offers a significant price savings in comparison to SYR offerings.

**Scrub Pad** - Constructed from a coarse fiber mesh. Scrub pads, also known as scouring pads, are designed to power through tough grease and grime. Manufactured with a scrub pad, the HeRO Double-Lock Mop enables staff to remove stubborn floor stains and shoe scuffs on baseboards.

**Loop-Ended & Bartacked** - The HeRO Double-Lock Mop features a loop-ended design. This comprises of a single yarn strand being continuously looped throughout the entire length of the mop. This characteristic greatly improves the durability and launderability of the mop verses a "cut-end" design. Furthermore, the mop is tailbanded by a half inch band of polyester that prevents bunching and increases floor coverage.





HeRO ITEM # 11005  
Product Weight: 21.0 oz  
Case Pack: 12 per case  
Product Dimensions:

Length - 17.0 in [43.0 cm] Tailband Width - 16.0 in [40.0 cm]

Case Dimensions:

Length - 20.0 in [50.8 cm] Width - 13.0 in [33.0 cm] Height -  
12.0 in [30.5 cm] Weight - 15.0 lbs [6.8 kgs]

## HeRO Grease Mop

[info@herotoolprogram.com](mailto:info@herotoolprogram.com) | (949) 838-7076



**Proprietary Design** - The HeRO Grease Mop functions because of two proprietary design elements. The first is a hydrophilic polyester yarn that is “liquid loving.” This means that the yarn absorbs food grease, water, cleaning chemicals, and even motor oil!

**Grease Release Agent** - The second design element is our “Grease Release Chemical Agent.” This specialized chemical is baked into the fabric of each mop via 100-foot-long commercial ovens, and is atomically formulated to instantly release grease.

**Superior Grease Fighting** - With 55% better performance over standard cotton mop yarns, the HeRO Grease Mop will significantly reduce your slip-and-fall risk! Furthermore, the mop is tailbanded by a half-inch strip of polyester that prevents bunching and increases floor coverage.







## HeRO Quick-Connector Mop

**HeRO ITEM # 11006**

**Product Weight:** 18.0 oz

**Case Pack:** 12 per case

**Product Dimensions:**

Length - 18.0 in [45.7 cm] Tailband Width - 14.0 in [35.6 cm]

**Case Dimensions:**

Length - 15.0 in [38.1 cm] Width - 15.0 in [38.1 cm] Height - 13.0 in [33.0 cm] Weight - 15.9 lbs [7.2 kgs]

[info@herotoolprogram.com](mailto:info@herotoolprogram.com) | (949) 838-7076



**Quick Connector** - Most economical mops are constructed using a thin paper band that easily breaks. What's more, replacing these cheap saddle mops is a disgusting chore that forces employees to physically unscrew the handle, pull out the soiled mop by hand, and insert a replacement. The HeRO Quick-Connector Mop avoids this hassle with a simple, easy-to-use plastic connector.

**Non Metal** - The HeRO Quick-Connector Mop is constructed entirely without metal. This makes the mop a perfect choice for high-risk facilities like correctional and rehabilitation institutions. For added convenience, all HeRO Quick-Connector Mop cases can be constructed entirely from cardboard and tape, eliminating staples.



**HeRO ITEM # 11007**

**Product Weight:** 16.0 oz

**Case Pack:** 12 per case

**Product Dimensions:**

Length - 17.0 in [43.0 cm] Tailband Width - 12.0 in [30.5 cm]

**Case Dimensions:**

Length - 15.0 in [38.1 cm] Width - 5.0 in [12.7 cm] Height - 12.0 in [30.5 cm] Weight - 14.7 lbs [6.7 kgs]

## HeRO Economy Mop

[info@herotoolprogram.com](mailto:info@herotoolprogram.com) | (949) 838-7076



**Cost-Effective** - Guaranteed to beat the price of any competitor, this cotton cut-end mop is ideal for stores, gyms, and schools. Designed for light-duty cleaning, this four-ply cotton mop provides good absorption and liquid retention. The HeRO Economy Mop is manufactured with a double stitched, one-inch wide cloth connector. This cloth connector is far more durable than comparable paper connector mops.

**Non Metal** - The HeRO Economy Mop is constructed entirely without metal. This makes the mop a perfect choice for high-risk facilities like correctional and rehabilitation institutions. For added convenience, all HeRO Economy Mop cases can be constructed entirely from cardboard and tape, eliminating staples.







— TOOL PROGRAM —

## HeRO Diaper Mop “Unwoven Microfiber”

info@herotoolprogram.com | (949) 838-7076

HeRO ITEM # 11008

**Product Weight:** 16.0 oz

**Case Pack:** 12 per case

**Product Dimensions:**

Length - 17.0 in [43.0 cm] Width - 16.0 in [40.0 cm] Height - 8.0 in [20.0 cm]

**Case Dimensions:**

Length - 20.0 in [50.8 cm] Width - 11.5 in [29.2 cm] Height - 12.0 in [30.5 cm] Weight - 16.8 lbs [7.6 kgs]



**Lint & Streak Free** – Due to the compact nature of microfiber, the HeRO Unwoven Microfiber Mop does not leave lint or streaks on floors.

**Microfiber Mops** – Constructed from ultra-dense fibers that are woven into single strands. Microfiber Mops have a superior ability to trap dirt, dust, and moisture. Moreover, their innovative construction is far lighter and more absorbent than comparable cotton mops. These characteristics make microfiber mops an excellent choice for scratch sensitive surfaces, intricate tile, restaurants, offices, hotels, and healthcare facilities.

**Extremely Absorbent** – Unlike most economical mops, the HeRO Unwoven Microfiber Mop is incredibly absorbent. This characteristic makes the mop a perfect “stand-by” for general spills that commonly occur in housing complexes, offices, schools, prisons, and restaurants.





HeRO ITEM # 11009

Product Weight: 18.2 oz

Case Pack: 12 per case

Product Dimensions:

Length - 54.0 in [137.2 cm] Diameter - 1.0 in [2.5 cm]

Case Dimensions:

Length - 5.5 in [14.0 cm] Width - 4.0 in [10.2 cm] Height -  
55.0 in [139.7 cm] Weight - 18.6 lbs [8.4 kgs]

## HeRO Universal Handle

[info@herotoolprogram.com](mailto:info@herotoolprogram.com) | (949) 838-7076



**Connector** - The HeRO Universal Handle offers a variety of connector choices, including female, male, and saddle. All connectors are designed to ensure a firm connection while allowing easy and efficient mop head replacements.

**Grip** - The HeRO Universal Handle utilizes a thermoformed, ergonomic hand grip with several ridges designed to reduce slippage and ensure comfort.

**Fiberglass** - The HeRO Universal Handle is extruded from ultra-lightweight fiberglass. Unlike most traditional wooden handles, the HeRO Universal Handle is engineered with a “honeycomb” interior design. This manufacturing process results in a handle that’s lightweight and ultra-durable.





## HeRO Pine Handle (Male)

**HeRO ITEM #** 11010

**Product Weight:** 15.3 oz

**Case Pack:** 12 per case

**Product Dimensions:**

Length - 54.0 in [137.2 cm] Diameter - 1.0 in [2.6 cm]

**Case Dimensions:**

Length - 55.0 in [139.7 cm] Width - 5.0 in [12.7 cm] Height - 5.0 in [12.7 cm] Weight - 10.5 lbs [4.8 kgs]

[info@herotoolprogram.com](mailto:info@herotoolprogram.com) | (949) 838-7076



**Lacquered Construction** - The HeRO Pine Handle features a durable hard lacquer construction that eliminates splinters and stands up to the busy demands of your restaurant, hotel lobby, or grocery store.

**Simplicity** - The HeRO Pine Handle's standard acme tip holds up against frequent use and ensures compatibility with standardized broom heads, mops, squeegees, and floor scrubbers.

**Saddle Connector** - In addition to the durable characteristics listed above, the HeRO Pine Handle features an optional ruggedized plastic saddle connector that incorporates a side release gate for fast and easy mop changes. This plastic connector utilizes a thumbwheel adjuster, ensuring that the mop head remains secure.



HeRO ITEM # 11011

Product Weight: 16.1 oz

Case Pack: 12 per case

Product Dimensions:

Length - 54.0 in [137.2 cm] Diameter - 1.0 in [2.5 cm]

Case Dimensions:

Length - 55.0 in [139.7 cm] Width - 5.0 in [12.7 cm] Height -  
5.0 in [12.7 cm] Weight - 11.0 lbs [5.0 kgs]

## HeRO Metal Threaded Handle

[info@herotoolprogram.com](mailto:info@herotoolprogram.com) | (949) 838-7076



**Metal Connector** - Constructed from the same durable materials as the HeRO Pine Handle, the HeRO Metal Threaded Handle features a countersunk, metal, acme-threaded connector. This metal-tipped feature improves durability and significantly increases the lifespan of the handle.

**Lacquered Construction** - The HeRO Metal Threaded Handle features a durable, hard-lacquer construction that eliminates splinters and stands up to the busy demands of your restaurant, factory, or outdoor facility.

**Simplicity** - The HeRO Metal Threaded Handle's acme tip ensures compatibility with standardized broom heads, mops, squeegees, and floor scrubbers.







## HeRO Dustmop “Swivel” Handle

HeRO ITEM # 11012

**Product Weight:** 21.8oz

**Case Pack:** 12 per case

**Product Dimensions:**

Length - 17.0 in [43.0 cm] Width - 16.0 in [40.0 cm] Height - 8.0 in [20.0 cm]

**Case Dimensions:**

Length - 20.0 in [50.8 cm] Width - 11.5 in [29.2 cm] Height - 12.0 in [30.5 cm] Weight - 16.8 lbs [7.6 kgs]

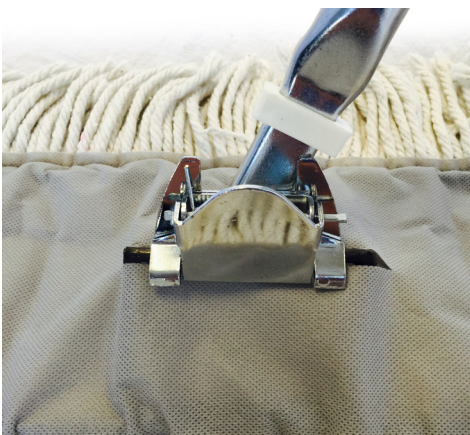
[info@herotoolprogram.com](mailto:info@herotoolprogram.com) | (949) 838-7076



**Swivel Connector** – Unlike many competitive handles, the HeRO Dustmop “Swivel” Handle features a 180-degree swivel action that provides excellent maneuverability.

**Spring Lock** – Designed for dependable use, the HeRO Dustmop “Swivel” Handle features a ruggedized spring-lock that provides easy attachment to wire dustmop frames.

**Durable Steel Construction** - The HeRO Dustmop “Swivel” Handle is constructed from a steel pipe that is coated in corrosion resistant plastic.



HeRO ITEM # 11013

Product Weight: 9.9 oz

Case Pack: 24 per case

Product Dimensions:

Length - 6.8 in [17.1 cm] Bristle Span - 11.6 in [29.5 cm]

Height - 1.6 in [4.1 cm]

Case Dimensions:

Length - 22.0 in [56.0 cm] Width - 21.7 in [55.0 cm] Height -

7.9 in [20.0 cm] Weight - 19.5 lbs [8.8 kgs]

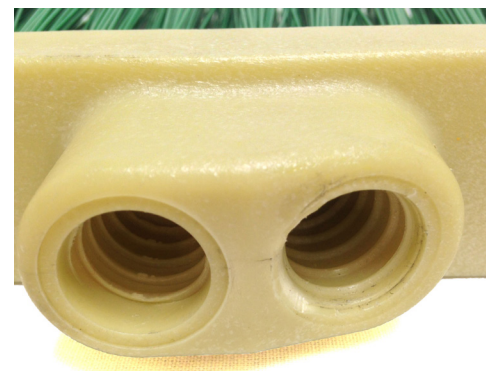
## HeRO Dual-Angle Broom Head

[info@herotoolprogram.com](mailto:info@herotoolprogram.com) | (949) 838-7076



**Simple, Study Construction** - The HeRO Dual-Angle Broom Head is a simple yet durable tool. With a typical broom, dust, dirt, and other contaminants enter the bristle housing leaving residue behind. Thanks to its solid block construction, the HeRO Dual-Angle Broom Head never stores residue. This ensures that the job is done correctly the first time.

**Dual-Angle Sweep** - This broom utilizes a dual-angle design that allows users to sweep at 65 or 90 degrees.





## HeRO Floor Squeegee

HeRO ITEM # 11014

**Product Weight:** 6.0 oz

**Case Pack:** 12 per case

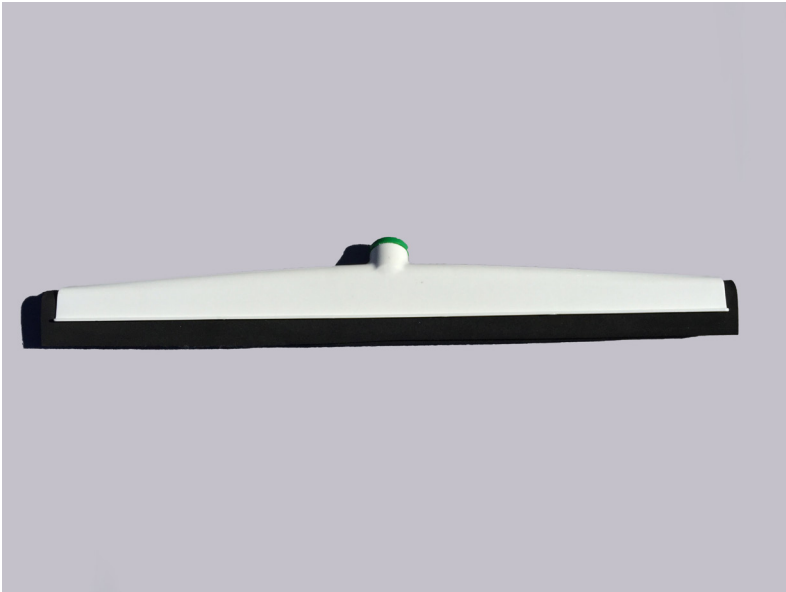
**Product Dimensions:**

Length - 21.5 in [54.6 cm] Width - 1.5 in [3.8 cm] Height - 2.0 in [5.1 cm]

**Case Dimensions:**

Length - 22.0 in [55.9 cm] Width - 14.0 in [35.6 cm] Height - 6.0 in [15.2 cm] Weight - 5.8 lbs [2.6 kgs]

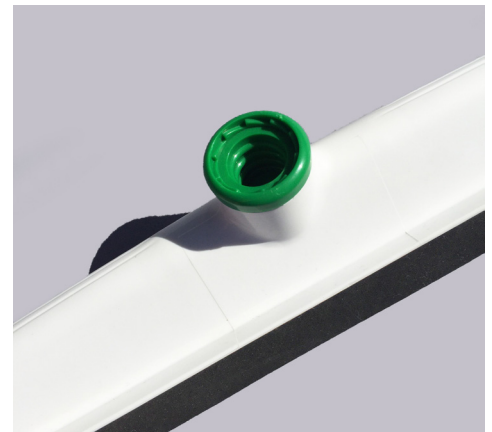
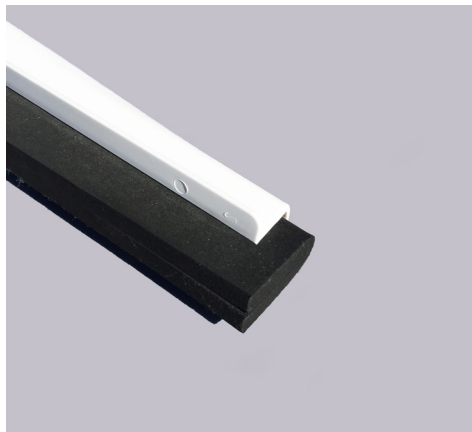
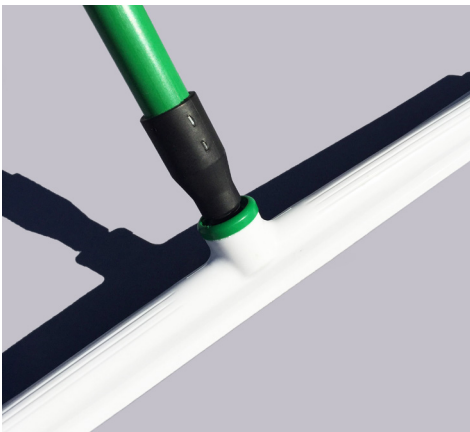
[info@herotoolprogram.com](mailto:info@herotoolprogram.com) | (949) 838-7076



**Ultra-Strong Construction** - The HeRO Squeegee is designed for industrial applications and is manufactured using strong, lightweight, corrosion resistant polypropylene, and moss rubber blades. The extra thick connector and reinforced "shoulders" prevent cracking and ensure a secure handle connection.

**Elongated Edge** - The HeRO Floor Squeegee is designed with an elongated front and back edge that prevents liquid from traveling over the squeegee when pulling or pushing. This feature reduces the time required to clear wet surfaces, and saves money on labor costs.

**Twin Blades** - By utilizing a twin-blade construction, the HeRO Squeegee ensures that all liquids are skimmed off in a single pass, making jobs easier and less time-consuming.





HeRO ITEM # 11015

Product Weight: 34.4 oz

Case Pack: 12 per case

Product Dimensions:

Length - 13.5 in [34.3 cm] Width - 6.0 in [15.2 cm] Height -  
3.0 in [7.6 cm]

Case Dimensions:

Length - 38.2 in [97.0 cm] Width - 10.6 in [26.9 cm] Height -  
10.6 in [26.9 cm] Weight - 23.6 lbs [10.7 kgs]

## HeRO Deck Brush

info@herotoolprogram.com | (949) 838-7076



**End Bristles** - The HeRO Deck Brush utilizes side bristles that allow access to tight corners, nooks, and other hard-to-reach areas.

**Dual-Bristle Trim** - The HeRO Deck Brush features two bristle trims that efficiently scrub flat surfaces, baseboards, and underneath counters.

**Hygienic Design** - The HeRO Deck Brush features crimped bristles that are securely fastened to the polypropylene block. This hygienic design can be easily washed, and prevents the gathering of mold and mildew.





## HeRO Toilet Brush

**HeRO ITEM # 11016**

**Product Weight:** 3.6 oz

**Case Pack:** 24 per case

**Product Dimensions:**

Length - 14.3 in [36.3 cm] Width - 5.5 in [14.0 cm] Head

Height - 3.1 in [7.9 cm]

**Case Dimensions:**

Length - 16.0 in [40.1 cm] Width - 10.5 in [26.7 cm] Height -

15.5 in [39.4 cm] Weight - 5.6 lbs [2.6 kgs]

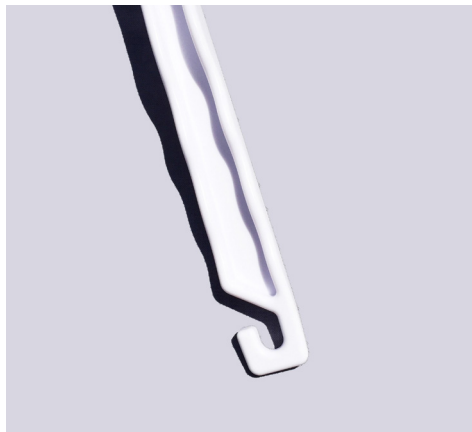
info@herotoolprogram.com | (949) 838-7076



**Bristles** - Manufactured from strong, lightweight, corrosion-resistant polypropylene, the HeRO Toilet Brush employs thick-gauge bristles that are fastened to metal anchors. These metal anchors are then inserted into the plastic body ensuring that the bristles remain tightly secured.

**Extra-Long Rim Scrub** - The HeRO Toilet Brush was created with a 3.5-inch adjustable toilet rim scrub. This unique feature creates a tool that's able to reach deep within the toilet rim, reducing bacteria and bad odors.

**Handle Design** - The HeRO Toilet Brush utilizes a solid plastic construction and utility hook that promotes durability and organization.





HeRO ITEM # 11017

Product Weight: 8.2 oz

Case Pack: 12 per case

Product Dimensions:

Length - 8.0 in [20.3 cm] Head Width - 3.0 in [7.6 cm]

Height - 2.8 in [7.0 cm]

Case Dimensions:

Length - 15.0 in [38.1 cm] Width - 5.0 in [12.7 cm] Height -

13.0 in [33.0 cm] Weight - 7.4 lbs [3.3 kgs]

## HeRO Gong Brush

[info@herotoolprogram.com](mailto:info@herotoolprogram.com) | (949) 838-7076



**Versatility** - The HeRO Gong Brush is a simple and incredibly versatile custodial product. It's ergonomic handle and stiff two-inch bristles are perfect for cleaning tile, wood, metal, various types of plastic, and hard-to-reach areas.

**Organization** - The HeRO Gong Brush features a half-inch eyelet for easy organization. Furthermore, the entire tool only measures 8-inches ensuring easy maneuverability and storage.





**HeRO ITEM # 11018**

**Product Weight:** 0.4 oz

**Case Pack:** 25 per case

**Product Dimensions:**

Length - 4.3 in [10.9 cm] Width - 2.5 in [6.4 cm]

Height - 1.3 in [3.3 cm]

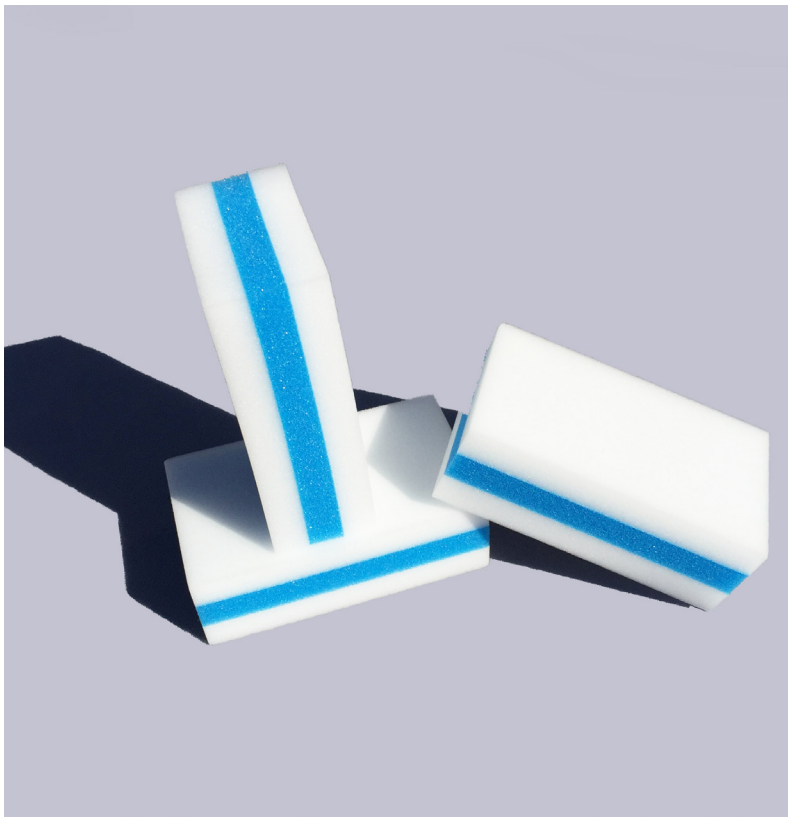
**Case Dimensions:**

Length - 13.8 in [35.1 cm] Width - 7.5 in [19.1 cm] Height -

5.1 in [13.0 cm] Weight - 2.2 lbs [1.0 kgs]

## HeRO Magic Eraser Sponge

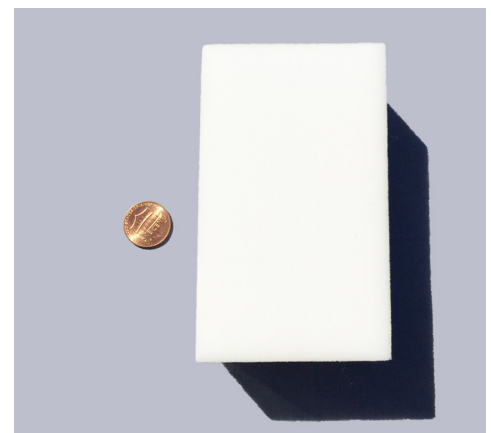
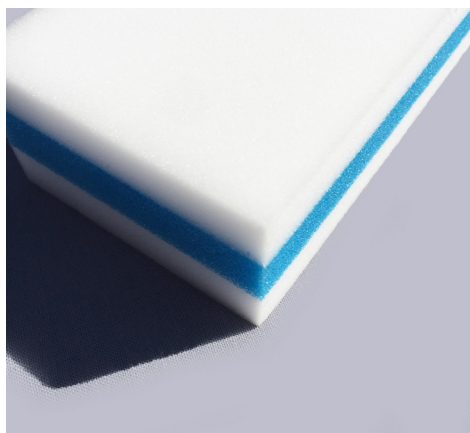
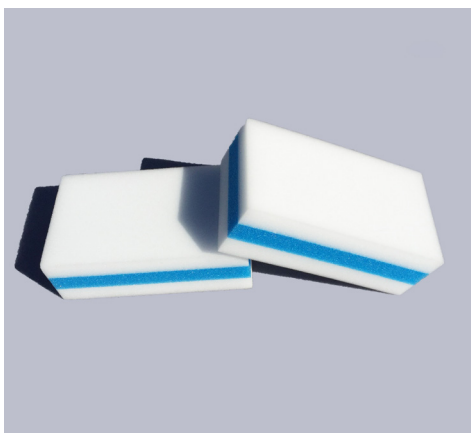
[info@herotoolprogram.com](mailto:info@herotoolprogram.com) | (949) 838-7076



**High-Quality Materials** - The HeRO Eraser Sponge is constructed from high-quality melamine foam. This open-cell foam contains microporous properties allowing it to clean most surfaces, including food preparation areas, greasy surfaces, glass, leather, and tile.

**Three-Part Construction** - The HeRO Eraser Sponge utilizes a three-part construction. The middle blue layer is manufactured from coarse foam, while the outside white layers provide a softer, porous surface.

**No Detergent Required** - The HeRO Eraser Sponge does not require detergents or chemicals. By simply applying water to the sponge, the melamine foam is activated. This prevents harsh cleaning chemicals from causing negative effects.





HeRO ITEM # 11019

**Product Weight & Capacity:** 12.3 lbs | 34 qt / 32 L

**Packaging:** 1 per case

**Product Dimensions:**

Length - 21.5 in [54.6 cm] Width - 15.5 in [39.4 cm]

Height - 35.5 in [90.2 cm]

**Case Dimensions:**

Length - 22.5 in [57.2 cm] Width - 17.0 in [43.2 cm] Height -

16.0 in [40.6 cm] Weight - 18.0 lbs [8.2 kgs]

## HeRO Standard Mop Bucket

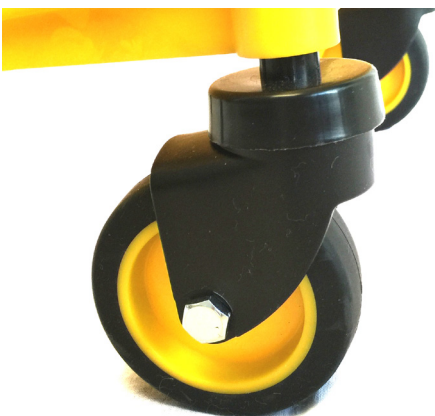
[info@herotoolprogram.com](mailto:info@herotoolprogram.com) | (949) 838-7076



**Heavy-Duty Furnishings** - The non-marking swivel bayonet wheels and cast-metal handle were incorporated into the HeRO Standard Mop Bucket to ensure it is able to withstand the most grueling custodial schedules.

**Removable Wringer** - With the wringer attachment placed above the bucket, you can effortlessly wring mops without the bending and pulling required with other mop buckets. For added convenience, this wringer can be removed prior to emptying the bucket, for an easier lift.

**Cautionary Details** - In an effort to ensure the safety of staff, customers, and others, the HeRO Standard Mop Bucket features red trilingual writing, neon-plastic construction, and visual images designed to get attention.





## HeRO Dual-Cavity Mop Bucket

info@herotoolprogram.com | (949) 838-7076

**HeRO ITEM # 11020**

**Product Weight & Capacity:** 13.0 lbs | 38 qt / 36L

**Case Pack:** 1 per case

**Product Dimensions:**

Length - 21.0 in [53.3 cm] Width - 14.0 in [35.6 cm]

Height - 39.0 in [99.1 cm]

**Case Dimensions:**

Length - 22.2 in [56.5 cm] Width - 15.9 in [40.5 cm] Height -

19.3 in [49.0 cm] Weight - 18.9 lbs [8.6 kgs]



**Dual-Cavity** - This mop bucket incorporates a dual cavity design to ensure that cleaning solution does not mix with soiled liquids. Compared to single-cavity mop buckets, this dual-cavity feature significantly reduces cross-contamination and allows custodial operations to use fewer chemicals. Moreover, this Dual-Cavity Mop Bucket features a removable "black water" container that reduces muscle strain, and makes cleaning tasks much easier.

**Interior Measurements** - The HeRO Dual-Cavity Mop Bucket features interior fluid measurements in gallons and liters. This unique feature enables portion control and eliminates the cost of excess chemical.

**Heavy-Duty Furnishing** - The non-marking swivel bayonet wheels, cast-metal handle, and "black water" locking clip were incorporated into the HeRO Dual-Cavity Mop Bucket to ensure that its able to withstand the most grueling custodial schedules.





HeRO ITEM # 11021

Product Weight: 34.7 oz

Case Pack: 12 per case

Product Dimensions:

Length - 57.0 in [144.8 cm] Base Width - 13.0 in [33.0 cm]

Handle Diameter - 1.3 in [3.3 cm]

Bundle Dimensions:

Length - 22.8 in [57.9 cm] Width - 16.9 in [42.9 cm] Height -

16.1 in [40.9 cm] Weight - 17.1 lbs [7.8 kgs]

## HeRO 100% Corn Broom

[info@herotoolprogram.com](mailto:info@herotoolprogram.com) | (949) 838-7076



**28-Pound Classification** - The HeRO 100% Corn Broom is classified as a 28-pound broom. This classification references the weight of 12 brooms packed together in a conventional manner. Traditional broom manufacturers refer to this 28-pound classification to signify excellent strength and durability.

**Ruggedized Sews Pattern** - The HeRO 100% Corn Broom features a ruggedized four-sews pattern that is complemented with a top metal band. This ruggedized detail creates a commercial grade broom that will not shed bristles.

**Heavy-Duty Handle** - The HeRO 100% Corn Broom features a heavy-duty, lacquered, pine handle. This lightweight yet durable handle will not bend or snap like other brooms, and the lacquered finish eliminates splinters.





## HeRO "Wet Floor" Sign

HeRO ITEM # 11022

**Product Weight:** 28.7 oz

**Case Pack:** 6 per case

**Product Dimensions:**

Length - 25.0 in [63.5 cm] Base Width - 12.0 in [30.5 cm]

Height - 17.0 in [43.2 cm]

**Case Dimensions:**

Length - 29.0 in [73.7 cm] Width - 13.0 in [33.0 cm] Height -

9.0 in [22.9 cm] Weight - 11.3 lbs [5.1 kgs]

info@herotoolprogram.com | (949) 838-7076



**Cautionary Details** - Created to ensure the safety of staff, customers, and other personnel, the HeRO "Wet Floor" Sign features red bilingual writing, neon-yellow plastic construction, and visual images designed to get attention.

**Thoughtful Construction** - The HeRO "Wet Floor" sign features sturdy interlocking hinges and friction nobs located on the bottom of each leg. This prevents the sign from falling over on wet floors.





HeRO ITEM # 11023

Product Weight: 31.0 oz

Case Pack: 1 per case

**Dustpan Dimensions:** Length - 17.0 in [43.0 cm] Width - 16.0 in [40.0 cm] Bucket Depth - 8.0 in [20.0 cm]

**Broom Dimensions:** Length - 20.0 in [50.8 cm] Width - 11.5 in [29.2 cm] Handle Diameter - 12.0 in [30.5 cm]

**Case Dimensions:**

Length - 20.0 in [50.8 cm] Width - 11.5 in [29.2 cm] Height - 12.0 in [30.5 cm] Weight - 16.8 lbs [7.6 kgs]

## HeRO Long-Handle Dustpan with Angled Broom

[info@herotoolprogram.com](mailto:info@herotoolprogram.com) | (949) 838-7076



**Angled Broom** - The HeRO Long-Handle Dustpan comes with a proportioned angled broom that is perfect for restaurants, hotels, schools, hospitals, and other settings.

**Rear Wheels** - The HeRO Long-Handle Dustpan incorporates two wheels into the rear of the dustpan, increasing maneuverability and reducing wear.

**Curved Aluminum Shaft** - Unlike most plastic competitors, the handles on the HeRO Dustpan are constructed from durable extruded steel. Furthermore, this dustpan features a convenient broom clip for easy organization.



## HeRO 36" and 24" Broom Heads

info@herotoolprogram.com | (949) 838-7076

HeRO ITEM # 11024 & 11025

**Product Weight:** 24" - 21.8 oz | 36" - 42.1 oz

**Case Pack:** 6 per case

**24" Broom Head:** Length - 24.0 in [61.0 cm] Width - 2.5 in [6.4 cm]  
Height - 4.0 in [10.2 cm]

**Case Dimensions:** Length - 145.0 in [368.3 cm] Width - 16.0 in [40.6 cm]  
Height - 25.0 in [63.5 cm] Weight - 12.5 lbs [5.7 kgs]

**36" Broom Head:** Length - 36.0 in [91.4 cm] Width - 2.5 in [6.4 cm]  
Height - 4.0 in [10.2 cm]

**Case Dimensions:** Length - 217.0 in [551.2 cm] Width - 16.0 in [40.6 cm]  
Height - 25.0 in [63.5 cm] Weight - 18.5 lbs [8.4 kgs]

### HeRO 24" Broom Head



**Simple, Reliable Design** - Featuring durable bristles mounted on a rugged hardwood block, the HeRO 24" and 36" Broom Heads are perfect for cleaning a variety of industrial settings including warehouses and receiving areas. Their thick bristles are made of polypropylene, a fiber that is resistant to heat and chemicals. Furthermore, the bristles are flagged at the tips producing a frayed design that allows the broom to pick up dust and small debris. Two holes on the top of the block are designed to work with compatible broom handles ensuring installation is complete with a few quick twists.

### HeRO 36" Broom Head



HeRO ITEM # 11026

Product Weight: 2.3 oz

Case Pack: 120 per case

Product Dimensions:

Length - 18.0 in [45.7 cm] Width - 5.5 in [14.0 cm]

Height - 0.375 in [1.0 cm]

Case Dimensions:

Length - 22.4 in [56.9 cm] Width - 18.9 in [48.0 cm] Height -

11.4 in [29.0 cm] Weight - 18.4 lbs [8.3 kgs]

## HeRO Microfiber Flat Mop

[info@herotoolprogram.com](mailto:info@herotoolprogram.com) | (949) 838-7076



**Precision** - The HeRO Microfiber Flat Mop combines with any standard 16-inch frame to create an incredibly precise cleaning tool that is able to reach under furniture and fit into tight corners.

**Quick Drying** - Designed with a thin foam layer, the HeRO Microfiber Flat Mop cleans with the same effectiveness as traditional mop heads yet dries within half the time.

**Microfiber Advantage** - Constructed from ultra-dense fibers that are woven into single strands, microfiber products have a superior ability to trap dirt, dust, and moisture. Moreover, their innovative construction is far lighter and more absorbent than comparable cotton products. These characteristics ensure your hospital, kitchen, or office floors remain clean while eliminating streaks and cotton residue.







## HeRO Aluminum Dustpan

info@herotoolprogram.com | (949) 838-7076

**HeRO ITEM # 11027**

**Product Weight:** 16.1 oz

**Case Pack:** 12 per case

**Product Dimensions:**

Length - 17.3 in [43.9 cm] Width - 19.0 in [48.3 cm]

Pan Thickness - 2.5 in [6.4 cm]

**Case Dimensions:**

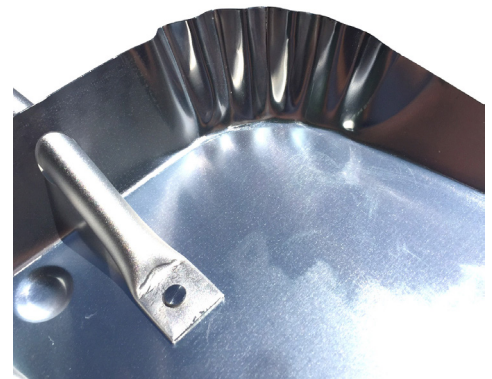
Length - 17.7 in [45.0 cm] Width - 17.7 in [45.0 cm] Height -

20.0 in [50.8 cm] Weight - 12.9 lbs [5.9 kgs]



**Heavy-Gauge Aluminum** - Made from sturdy, lightweight aluminum, the HeRO Aluminum Dustpan is built to withstand abuse in your restaurant, factory, or hospital. In addition, the dustpan features a ribbed design that offers superior strength and added durability. What's more, this dustpan has been designed with a thin front edge that prevents that pesky line of dirt from being left behind.

**Oversided Handle** - The HeRO Aluminum Dustpan features an oversized, brushed-metal handle that's secured to the dustpan via two thick-gauge rivets. This 9-inch handle and secure connection create a rugged tool that enables easy debris pickup.



HeRO ITEM # 11028

Product Weight: 61.4 oz

Case Pack: 4 shovels per bundle

Product Dimensions:

Length - 47.5 in [120.7 cm] Scoop Width - 15.0 in [38.1 cm]

Scoop Length - 18.5 in [47.0 cm]

Case Dimensions:

Woven Bag Cubic Feet - 1.77 / Woven Bag Cubic Meter -

0.05 | Weight - 16.5 lbs [7.5 kgs]

## HeRO Metal “Jumbo-Scoop” Shovel

[info@herotoolprogram.com](mailto:info@herotoolprogram.com) | (949) 838-7076



**Heavy-Gauge Aluminum** - Made from sturdy, lightweight aluminum, the HeRO Aluminum “Jumbo-Scoop” Shovel is built to withstand abuse in your warehouse, factory, or farm.

**Jumbo-Scoop** - Thanks to its large surface area, the HeRO “Jumbo-Scoop” is capable of shoveling hefty amounts of grain, seed, snow, cardboard, packing peanuts, and trash in a quick and efficient manner that doesn’t strain your wrists.

**D-Shape Fiberglass Handle** - The D-Shape handle on the HeRO Metal “Jumbo-Scoop” Shovel provides ample space for a variety of hand positions. It’s thick, lightweight, fiberglass handle provides control for seamless maneuvering.





## HeRO ABS "Jumbo-Scoop" Shovel

[info@herotoolprogram.com](mailto:info@herotoolprogram.com) | (949) 838-7076

**HeRO ITEM # 11029**

**Product Weight:** 76.6 oz

**Case Pack:** 6 shovels per bundle

**Product Dimensions:**

Length - 46.5 in [118.1 cm] Scoop Width - 14.5 in [36.8 cm]

Scoop Length - 18.0 in [45.7 cm]

**Case Dimensions:**

Woven Bag Cubic Feet - 3.4 / Bundle Cubic Meter - 0.09

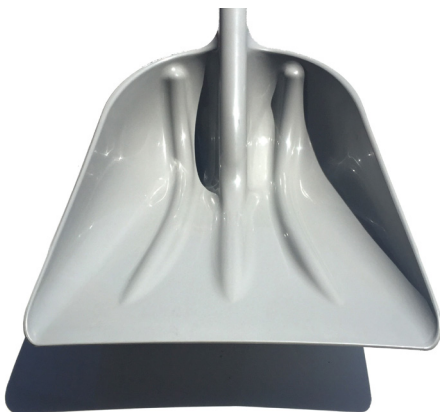
Weight - 30.9 lbs [14.0 kgs]



**Rugged ABS Scoop** - Made from rugged ABS (Acrylonitrile Butadiene Styrene) thermoplastic, the HeRO ABS "Jumbo-Scoop" Shovel can withstand consistent use without breaking, bending, or scratching.

**Jumbo Scoop** - Thanks to its large surface area, the "Jumbo-Scoop" is capable of shoveling hefty amounts of grain, seed, snow, cardboard, packing peanuts, and trash in a quick and efficient manner that doesn't strain your wrists.

**D-Shaped Wooden Handle** - The D-shaped handle on the HeRO ABS "Jumbo-Scoop" Shovel provides ample space for a variety of hand positions. Its thick, lightweight, lacquered, wooden handle provides control for seamless maneuvering.





**HeRO ITEM # 11030 & 11031**

**Product Weight:** 24" - 13.0 oz | 36" - 15.7 oz

**Case Pack:** 12 per case

**24" Dustmop:** Length - 24.0 in [61.0 cm] Width - 5.0 in [12.7 cm] Height - 0.5 in [1.3 cm]

**24" Case Dimensions:** Length - 16.2 in [41.1 cm] Width - 10.2 in [25.8 cm] Height - 15.3 in [38.7 cm]

**36" Dustmop:** Length - 36.0 in [91.4 cm] Width - 5.0 in [12.7 cm] Height - 0.5 in [1.3 cm]

**36" Case Dimensions:** Length - 16.2 in [41.1 cm] Width - 10.2 in [25.8 cm] Height - 15.3 in [38.7 cm]

## HeRO 24" & 36" Dustmops

[info@herotoolprogram.com](mailto:info@herotoolprogram.com) | (949) 838-7076



**Simple Pocket Insert** – Created for simplicity, the HeRO 24" and 36" dust mops are designed with an intuitive frame pocket. This pocket allows users to insert frames into the dust mop without the hassle of zippers or "tie flies" commonly found in comparable dust mops.

**Double Stitched Seams** – The HeRO 24" & 36" dust mops feature industrial grade double-stitched seams. This durable stitching can be found on the top and bottom of all HeRO dust mops.

**100% Recycled Materials** – Designed with 100% recycled materials originating from post-industrial cotton, the HeRO 24" & 36" dust mops feature high-tensile "zero-tear" canvas and 4-ply cotton.





## HeRO 24" & 36" Dustmop Frames

info@herotoolprogram.com | (949) 838-7076

**HeRO ITEM # 11032 & 11033**

**Product Weight:** 24" - 12.0 oz | 36" - 16.2 oz

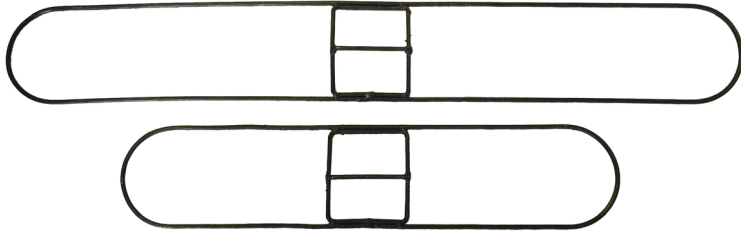
**Case Pack:** 12 per case

**24" Frame:** Length - 24.0 in [61.0 cm] Width - 5.0 in [12.7 cm] Height - 1.0 in [2.5 cm]

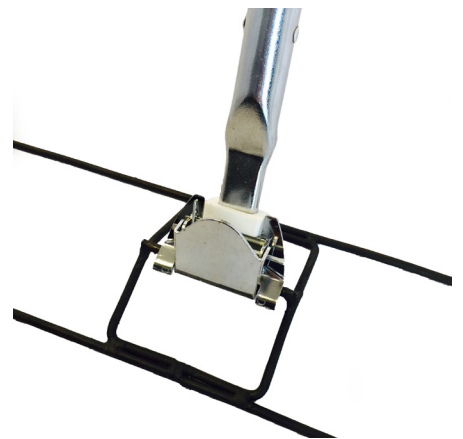
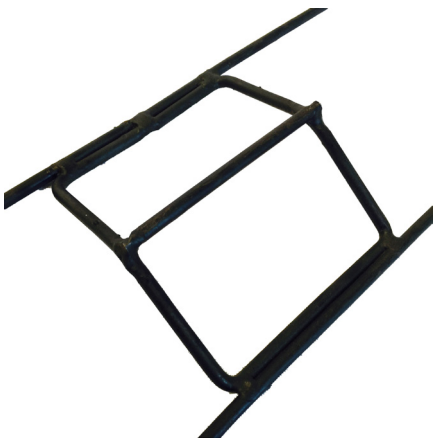
**24" Case Dimensions:** Length - 24.5 in [62.2 cm] Width - 5.3 in [13.3 cm] Height - 5.5 in [14.0 cm]

**36" Frame:** Length - 36.0 in [91.4 cm] Width - 5.0 in [12.7 cm] Height - 1.0 in [2.5 cm]

**36" Case Dimensions:** Length - 36.5 in [92.7 cm] Width - 5.3 in [13.3 cm] Height - 5.5 in [14.0 cm]



**Rust Resistant Steel & Multipoint Welds** – The HeRO 24" & 36" dust mop frames are constructed from rust-resistant steel, and feature a 3-point weld on both sides of the connector bracket. These characteristics make the tool incredibly durable, and a reliable asset to any custodial operation.



**HeRO ITEM # 11034**

**Product Weight:** 7.2 oz

**Case Pack:** 12 per case

**Product Dimensions:**

Length - 17.0 in [43.0 cm] Width - 16.0 in [40.0 cm]

Height - 8.0 in [20.0 cm]

**Case Dimensions:**

Length - 20.0 in [50.8 cm] Width - 11.5 in [29.2 cm] Height -

12.0 in [30.5 cm] Weight - 16.8 lbs [7.6 kgs]

## HeRO Plunger

[info@herotoolprogram.com](mailto:info@herotoolprogram.com) | (949) 838-7076



**Extended Handle** – Unlike many competitive plungers, the HeRO plunger features a 24" solid pine handle that enables staff to fix plumbing issues without hunching over or worry of splash back.

**Thick-Gauge Rubber** – Designed with thick gauge rubber, the HeRO plunger will not crack or split like most economical plungers.

**Chemical & Porcelain Safe** – Thanks to its chemically-safe rubber and non-abrasive pine handle, the HeRO plunger will not corrode after use with cleaning chemicals. Furthermore, the solid pine handle will not scratch or scuff your porcelain or stainless steel toilets.







— TOOL PROGRAM —

## HeRO Griddle Scrub & Replacement Pad [40-Pack]

[info@herotoolprogram.com](mailto:info@herotoolprogram.com) | (949) 838-7076

HeRO ITEM # 11035 & 11036

**Griddle Scrub Weight:** 13.9 oz | **Pad Weight:** 0.77 oz

**Scrub Case Pack:** 12 per case | **Pad Case Pack:** 40 per case

**Griddle Scrub Product Dimensions:** Length - 20.0 in [50.8 cm] Width - 5.0 in [12.7 cm] Height - 3.5 in [8.9 cm]

**Pad Product Dimensions:** Length - 9.0 in [22.9 cm] Width - 5.0 in [12.7 cm] Height - 0.5 in [1.3 cm]

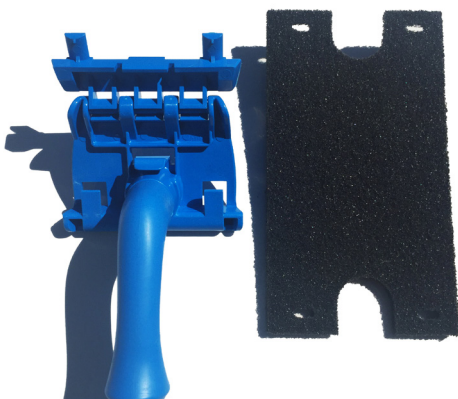
**Griddle Scrub Case Dimensions:** Length - 20.0 in [50.8 cm] Width - 11.5 in [29.2 cm] Height - 12.0 in [30.5 cm]

**Pad Case Dimensions:** Length - 18.5 in [47.0] Width - 10.5 in [26.7 cm] Height - 5.4 in [13.7 cm]



**Ergonomic Handle** – Featuring a curved handle that is molded from a single plastic injection, the HeRO Griddle Scrub is ergonomically designed so that staff can access hard-to-reach areas, and effortlessly remove baked-on grease.

**Interchangeable Pads** – Unlike competitive brushes or grill bricks that utilize a permanent scouring surface, the HeRO Griddle Scrub features interchangeable pads that ensure continuous hygienic cleaning.



HeRO ITEM # 11037

Product Weight: 16.4 oz

Case Pack: 12 per case

Product Dimensions:

Length - 17.0 in [43.0 cm] Width - 16.0 in [40.0 cm]

Height - 8.0 in [20.0 cm]

Case Dimensions:

Length - 20.0 in [50.8 cm] Width - 11.5 in [29.2 cm]

Height - 12.0 in [30.5 cm] Weight - 16.8 lbs [7.6 kgs]

## HeRO Scouring Pads [40-Pack]

[info@herotoolprogram.com](mailto:info@herotoolprogram.com) | (949) 838-7076



**Universal Cleaning** - Designed for quick, effective cleaning on a variety of common surfaces, the HeRO 40-Pack of Scouring Pads can easily remove baked-on food in difficult corners and hard-to-reach areas. Perfect for removing grease and food residue, these scouring pads feature tough abrasive fabric that makes fast work of medium-duty cleaning jobs.

In addition to routine foodservice cleaning tasks, the HeRO Scouring Pads can clean walls, railings, floors, desks, coffee makers, base boards, stairways, countertops, and much more!





## HeRO Roller Brush

**HeRO ITEM # 11038**

**Product Weight:** 7.4 oz

**Case Pack:** 12 per case

**Product Dimensions:**

Length - 17.0 in [43.0 cm] Width - 16.0 in [40.0 cm] Height - 8.0 in [20.0 cm]

**Case Dimensions:**

Length - 20.0 in [50.8 cm] Width - 11.5 in [29.2 cm]

Height - 12.0 in [30.5 cm] Weight - 16.8 lbs [7.6 kgs]

[info@herotoolprogram.com](mailto:info@herotoolprogram.com) | (949) 838-7076



**24" Handle** – Constructed from a solid piece of plastic, the HeRO roller brush features a 24" handle enabling users to clean roller grills without placing elbows or hands near the hot cooking surface.

**V-Shaped Bristles** – The HeRO roller brush features V-Shaped bristles that are uniquely suited to remove cooking stains and hot-dog grease.

**High Heat Rating (390° F)** – Unlike most competitive brushes, the HeRO roller brush is constructed from specialized polyester which will not soften or melt on your hot-dog rollers!





**HeRO ITEM # 11039**

**Product Weight:** 0.6 oz

**Case Pack:** 40 sponges per case

**Product Dimensions:**

Length - 6.0 in [1.0 cm] Width - 3.5 in [1.0 cm]

Height - 0.875 in [1.0 cm]

**Case Dimensions:**

Length - 12.5 in [31.8 cm] Width - 10.5 in [26.7 cm] Width -

8.0 in [20.3 cm] Weight - 1.5 lbs [0.7kgs]

## HeRO White Scouring Pad

[info@herotoolprogram.com](mailto:info@herotoolprogram.com) | (949) 838-7076



**Sensitive Cleaning** – Thicker and softer than the green HeRO scouring pads, these white scouring pads feature an innovative, non-abrasive construction that is tough on grime, but gentle enough to clean your finest china. Plus, it can be used on your porcelain and ceramic dinnerware and will not cause scratches.

**Ergonomic Shape** – The HeRO White Scouring Pads are designed to fit in the palm of your hand for easy cleaning. This eliminates the common struggle of folding or cutting large pads.



# HeRO

## — TOOL PROGRAM —

HeRO Imports, LLC  
[www.HeROToolProgram.com](http://www.HeROToolProgram.com)  
(949) 838-7076  
[info@herotoolprogram.com](mailto:info@herotoolprogram.com)